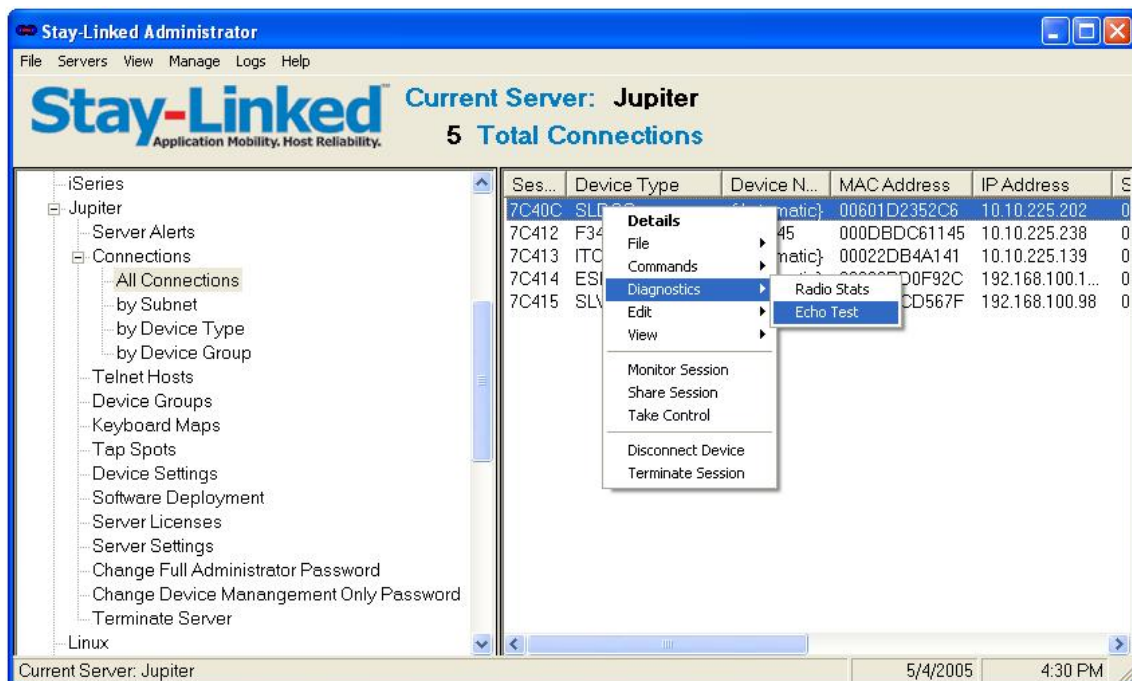


### New, Improved Stay-Linked Administrator User Interface

- Newly designed 'Explorer-style' user interface.
- Easily manage multiple Stay-Linked Servers from a single Administrator console.
- Password-controlled Administrator provides 'Full Administration' access or 'Device Management Only' access.
- Remotely disconnect devices, leaving the session running on the host.
- Barcode settings can now be defined for specific barcode symbologies and lengths.
- Enhanced Diagnostics allow the administrator to remotely launch 'Radio Stats' and 'Echo Test' functions on the device.



### Enhanced Device Connections Listing

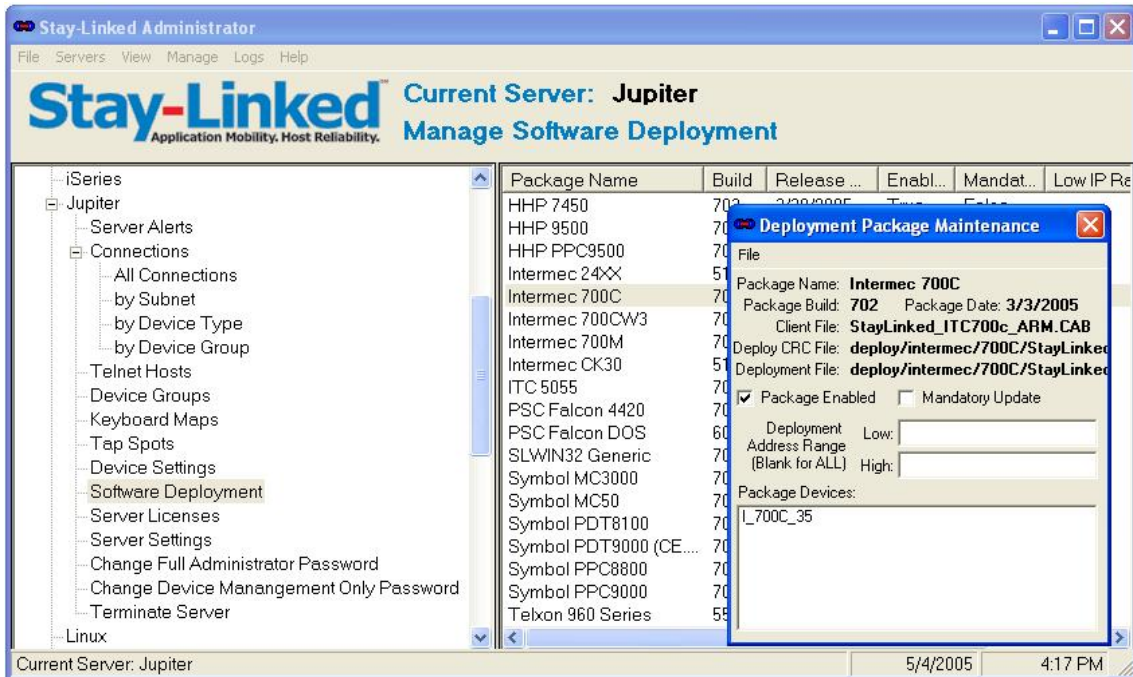
- More efficient interface to ease management of large numbers of devices.
- Drill-down by Subnet, Device Type, Device Group or list all devices.

### Stay-Linked API for Host Applications

- Provides control of Stay-Linked devices from your end user application.
- Retrieve session attributes like Device Type, IP Address, MAC Address, Device Name, Client Version, Display Rows and Columns, etc.
- Transfer files to and from the devices from your end-user application.
- Reboot, Restart, Disconnect and Terminate sessions from the end-user applications.
- Send special, highly visible messages to the device from the end-user applications.
- Run remote command and programs on the device, controlled by the end-user application.

## Automated Client Software Updates

- Provides centralized management of Stay-Linked Client updates.
- Ability to import 'Stay-Linked Deployment Packages' onto the Stay-Linked Server for Automated Deployment to Devices.
- Control Mandatory vs. Optional Deployment.
- Control Client Updates by Device Type and IP Range.
- Updates are efficiently deployed to the devices when new connections are established.
- Manage bandwidth utilization by controlling the number of concurrent deployments.
- Client Software Updates can be manually pushed to the device from the Stay-Linked Administrator.



## Centralized Device Settings Management

- Provides centralized management of all Stay-Linked Client Settings (staylink.ini).
- Manage Device Settings Globally, by Device Type, by IP Range or by MAC Address.
- Settings are efficiently deployed to the devices when new connections are established.
- Settings can be manually pushed to the device from the Stay-Linked Administrator.



## Additional Supported Host Platforms for Stay-Linked Server Software

- Support for the SCO OpenUnix Platform.

## More Flexible Licensing Options

- Available with or without Advanced Terminal Session Management features enabled

###